



ELECTRONIC FEDERAL TAX PAYMENT SYSTEM BATCH PROVIDER SOFTWARE USER MANUAL



Contents

1.1	Welcome To Eftps	7
1.1.1	Who Should Use This Guide?	7
1.2	Recommended System Requirements	7
1.3	Overall Process And Timing	8
Installation and Setup		9
2.1	Installing Eftps Batch Provider Software	10
2.2	Running On A Network Environment	11
2.3	Launching The Software	11
2.3.1	Setting The Database Passwords	11
2.3.2	To Use This Software With A New Registration	12
2.3.3	To Use This Software If You Are Already Enrolled In Eftps As A Taxpayer	12
Software Overview		13
3.1	Navigating The Software	13
3.2	Using Wizards	13
3.3	Requesting A Synchronization Log	13
3.4	Receiving Error Messages	14
3.5	Interpreting Statuses	14
3.5.1	Registration And Enrollment Statuses	14
3.5.2	Payment Statuses	15
3.6	Reinstalling Software	15
3.7	Receiving Software Updates	15
Registration		16
4.1	Creating A New Registration	16
4.1.1	Step 1: Registration Information	16
4.1.1.1	If You Are Already Using Eftps As A Taxpayer—Express Registration	16
4.1.2	Name And Tin	17
4.1.3	Contact Information	17
4.1.4	Email Notification	17
4.1.5	Step 5: Financial Institution Information	18
4.1.6	Step 6: Disclosure Information	18
4.1.7	Step 7: Authorization Agreements	18

4.1.8 To Submit.....	18
4.2 Your Registration Welcome Packet.....	18
4.3 Receiving Your Master Pin	19
4.4 Obtaining A Master Password	19
4.5 Creating Additional Registrations	20
4.6 Editing A Registration	20
4.6.1 To Edit A Registration	20
4.6.2 To Submit The Registration Changes To Eftps	20
4.6.3 To Synchronize Your Registration	20
4.7 Editing A Registration's Financial Information.....	21
4.7.1 To Edit A Registration's Financial Information	21
4.7.2 To Submit The Financial Information Changes To Eftps	21
4.7.3 To View The Transactions Impacted By The Financial Information Change:.....	21
4.8 Editing A Master Pin	22
4.9 Editing A Master Password.....	22
4.10 Choosing Your Payment Methods	22
4.10.1 To Change The Payment Method	23
4.10.2 To Submit The Changes To Eftps	23
Enrollments.....	24
5.1 Creating An Enrollment.....	24
5.1.1 Tin And Name	24
5.1.2 Disclosure Authorization	25
5.1.3 Contact Information.....	25
5.1.4 Financial Information.....	25
5.1.5 Optional Tax Form Limits.....	25
5.1.6 Optional Self-Selected Enrollment Pin/System-Generated Taxpayer Inquiry Pin	26
5.1.7 To Submit Entered Enrollments	26
5.1.8 To Synchronize Enrollments	27
5.2 Editing Enrollment Information.....	27
5.2.1 To Edit An Existing Enrollment.....	27
5.2.2 To Submit Changes	28
5.3 Editing Enrollment Financial Information.....	28
5.3.1 To Edit The Financial Information	28
5.3.2 To Submit The Financial Information Changes To Eftps	29

5.4	Deleting An Enrollment	29
5.5	Terminating An Enrollment	29
5.5.1	To Terminate An Enrollment	29
5.5.2	To Submit A Terminated Enrollment To Eftps	30
5.6	Archiving An Enrollment	30
5.6.1	To Archive An Enrollment:	30
5.7	Viewing Archived Enrollments	30
5.8	Activating Archived Enrollments	31
5.9	Performing Enrollment Inquiries	31
5.10	Importing Existing Enrollments From A Text File	32
5.11	Exporting Enrollments To A File	32
5.12	Revoking A Third-Party Authorization	32
Payments	33
6.1	Payment Screen Overview	33
6.2	Creating Payments	33
6.2.1	To Add A Payment	34
6.2.2	To Submit Entered Payments	34
6.2.3	To Synchronize Payments	35
6.3	Synchronizing Payment History.....	35
6.4	Importing Payment Data	35
6.5	Checking For Duplicate Payments	36
6.6	Canceling Payments.....	36
6.7	Performing Payment Inquiries	37
6.8	Exporting Payments To A File	38
6.9	Copying And Pasting Payments	38
6.10	Making Payments By Phone	38
6.11	Affordable Care Act (Aca) Shared Responsibility Payments.....	38
User Administration	40
7.1	Determining User Roles.....	40
7.2	Adding Users And Defining Roles	41
7.2.1	To Add A User	41
7.2.2	To Define A Role	41
7.3	Editing And Deleting Users And Roles	41
Notifications	42

8.1.1 To Check For New Messages.....	42
8.1.2 To Read Messages	42
8.1.3 To Delete A Message.....	42
8.2 Calendar	43
8.3 Email Communications And Security	43
Troubleshooting	45
Glossary	47
Appendix A: Record Layout For Importing Enrollments	50
Appendix B: Record Layout For Importing New Payments	51
Appendix C: Record Layout For Exporting Payments (Comma-Delimited File Format).....	52
Appendix D: How To Apply Proxy Settings	53
Appendix E: Federal Reserve Bank Holidays	55
Appendix F: Important Phone Numbers.....	55

INTRODUCTION

1.1 WELCOME TO EFTPS

The Electronic Federal Tax Payment System (EFTPS) is a free service of the U.S. Department of the Treasury. The system has been in use since 1996, with millions of businesses and individual taxpayers and thousands of tax professionals making payments through channels, including [EFTPS.gov](https://www.efdps.gov), a voice response system, and the batch provider software.

1.1.1 Who should use this guide?

- Tax professionals who wish to make multiple federal tax payments electronically for clients.
- Taxpayers who wish to make multiple federal tax payments electronically for several businesses or subsidiaries.

1.2 RECOMMENDED SYSTEM REQUIREMENTS

Operating Systems	Microsoft Windows	Apple Macintosh	Linux
Processor	Intel i5-2400 Sandy Bridge Quad-Core or above, or AMD Ryzen 5 2600 or above	1.0 GHz Intel Core i5	Intel i5-2400 Sandy Bridge Quad-Core or above, or AMD Ryzen 5 2600 or above
Memory	4 gigabytes with at least 1 gigabyte free	4 gigabytes with at least 1 gigabyte free	4 gigabytes with at least 1 gigabyte free
Disk Space	250 gigabytes with at least 10% free	250 gigabytes with at least 10% free	250 gigabytes with at least 10% free
Internet Connection	Broadband recommended	Broadband recommended	Broadband recommended

You will also need to have an Internet connection, either broadband (DSL or cable modem) or dial-up. Broadband recommended for Mac. *Installation and use of the software requires OSX with Java Runtime Version 1.4.2 or greater.

1.3 OVERALL PROCESS AND TIMING

1. Install software. (See Section 2.1)
2. Complete your registration. (See Section 4.1)
3. Receive by mail:
 - a. Your Registration ID.
 - b. In a separate mailing, Master PIN and instructions for obtaining a Master Password.
4. Obtain your Master Password by calling **1.800.945.7337**.
5. Change your Master Password. (See Section 4.4)
6. Synchronize your Registration. (See Section 4.6.3)

www.eftps.gov

Top menu bar: Help & Information

Left menu:
Downloads/Software

Scroll

Welcome To EFTPS - Help and Information

https://www.eftps.gov/eftps/direct/DownloadSoftware.page

EFTPS
Electronic Federal Tax Payment System

HOME ENROLLMENT MY PROFILE PAYMENTS **HELP & INFORMATION** CONTACT US LOGIN

INTRODUCTION
ABOUT EFTPS
SECURITY
DISCLOSURE/PRIVACY STATEMENT
ACCESSIBILITY STATEMENT
TERMS AND CONDITIONS
FAQs
GLOSSARY
DOWNLOADS
DOCUMENTS
SOFTWARE
LINKS
HOW TO

Downloads—Software

NEW! Batch Provider Software

The new EFTPS Batch Provider Software is designed for tax professionals that prepare and pay federal taxes for clients or multiple Taxpayer Identification Numbers (TINs).

The new version of the software contains many enhancements designed to make paying easier:




- Send up to 1,000 enrollments and 5,000 payments in one transmission
- Synchronize enrollments and payment history between the software and the EFTPS database in real-time
- Use memorized transaction capability where the last transaction is automatically displayed for each EIN/SSN
- Make individual debits to a Master Account or clients' account (or both)
- Change Master Account without re-enrolling clients
- Send clients a Taxpayer Inquiry PIN so they can look at their accounts online
- Import/export enrollments and payments
- Create customized reports

You can set roles and responsibilities for multiple users of the software, receive email messages or notifications, and use a built-in calendar to help keep track of payment due dates, holidays, and communications with other users of the software.

User's Manual and Quick Start Guide also available (see [Downloads - Documents](#)).

System Requirements

Operating Systems	Windows®	Macintosh®	Linux™
Processor	780 MHz Intel® Pentium® III or equivalent	1.0 GHz G4 or equivalent	780 MHz Intel® Pentium® III or equivalent
Memory	Less than 250 enrollments 512 megabytes More than 250 enrollments 1 gigabyte	512 megabytes	Less than 250 enrollments 512 megabytes More than 250 enrollments 1 gigabyte
Disk Space	125 megabytes of free disk space	125 megabytes of free disk space	125 megabytes of free disk space
Internet Connection	56k modem (broadband recommended)	56k modem (broadband recommended)	56k modem (broadband recommended)

Download  Download  Download 

Click correct O/S

2.1 INSTALLING EFTPS BATCH PROVIDER SOFTWARE

Please Note: For Windows to install the Batch Provider Client correctly, it must be executed as an Administrator. If you do not have administrative privileges, please contact your system administrator.

1. Go to EFTPS.gov and click Help and Information.
2. Select Downloads, Software.
3. Scroll to System Requirements and click the correct "Download" link for your operating system.
4. Click "Download" again.
5. Click "Run."
6. Click "Run" again.
7. On the Install Anywhere Introduction window, click "Next."
8. Accept the license agreement and click "Next."
9. Select the default C: Folder Path and click "Next."
10. Review the database security information and click "Next."
11. Select Single User and click "Next."
12. Create User Name and Password (both case sensitive).
13. Click "Install."

2.2 RUNNING ON A NETWORK ENVIRONMENT

1. Install the software on the server first.
2. Install the software on the computers that network through the server.
3. If you need to use a proxy server to connect outside of a firewall, you must place the proxy server address in one of the batch provider software files on your hard drive. Contact your Network Administrator to obtain the specific proxy server address, port, and any realm, user name, or password information. (see Appendix D)

Precaution

The application must not be started more than once on a particular server.

To control this, set the File Permissions on the BatchProvider.exe file to allow only one user (or a controlled set of users) to have execute permissions on the server installation. This will prevent unauthorized or accidental start-up of the application. A controlled set of users would need to coordinate start-up of the application so that it is only started once at any given time.

2.3 LAUNCHING THE SOFTWARE

1. Log on using the Administrator's User ID and Password.
2. Click the User Administration tab to create any other roles and User IDs. (see Section 7)

2.3.1 Setting the Database Passwords

Upon installation of the Batch Provider software, the administrator must set the values for the database admin password and the database encryption password. These values must be updated subsequently every 13 months. You will receive warning prompts to update these passwords once they are within 60 days of expiration.

1. Navigate to "Administration" > "Set Database Passwords" to update the admin and encryption passwords.

Note – If the database admin and encryption passwords have not been set or if they have expired, you will be prompted to update these passwords before any users are able to proceed within the application.

2. Specify values for the database admin and database encryption passwords. Each password value must comply with the following:

- Must be between 12 and 30 characters in length
- Must contain at least 1 upper-case letter (A, B, C, etc.)
- Must contain at least 1 lower-case letter (a, b, c, etc.)
- Must contain at least 1 number (1, 2, 3, etc.)
- Must contain at least 1 of the following special characters (!, @, #, \$, *, +, -)
- Must not contain double characters (no 2 consecutive characters can be the same value)
- Must not be the same as any of the 5 previous passwords used

3. Click "Update."

The database admin and encryption passwords are changed immediately and the database will be re-encrypted.

2.3.2 To use this software with a new registration

1. Start the application and log on using the Administrator's User ID and Password.
2. Click the Registration tab and follow the steps to create a new Registration. (See Section 4.1)
3. Using your PIN (which you will receive in the mail) and your batch provider identification number, obtain your Master Password by calling **1.800.945.7337**.
4. Change your Master Password. (See Section 4.4)
5. Download your new Registration by synchronizing. (See Section 4.6.3)

2.3.3 To use this software if you are already enrolled in EFTPS as a taxpayer

1. Log on using the Administrator's User ID and Password.
2. Perform the Express Registration process described in Section 4.1.1.
3. Using your Self-Selected Master PIN and batch provider identification number, obtain your Master Password by calling **1.800.945.7337**.
4. Change your Master Password. (See Section 4.4)
5. Upload the new Registration by synchronizing. (See Section 4.6.3)

SOFTWARE OVERVIEW

You can organize your taxpayer and tax payment information within five major tabs and their subtabs:

1. Registration	Manage your Registration(s).
User Administration	Create user accounts and assign roles and responsibilities for your software users.
3. Notifications	Receive messages from EFTPS and communicate between your users.
a. Messages	View message history from EFTPS.
b. Calendar (optional)	Make notes, schedule activities, and send and receive messages from other users.
4. Enrollments	Manage your enrollments.
a. Send Enrollments	Add and submit new taxpayer enrollments.
b. Enrollment Inquiry	View your current taxpayer enrollments and synchronize your enrollments with EFTPS.
5. Payments	Manage your taxpayer payments.
a. Send Payments	Add and submit new tax payments.
b. Cancel Payments	Submit tax payment cancellations to EFTPS.
c. Payment Inquiry	View your current tax payments and synchronize your payments with EFTPS.

3.1 NAVIGATING THE SOFTWARE

Navigate the software by clicking on the five tabs and their subtabs and using the following buttons to take action:

Add	View
Edit	Copy
Paste	Import
Delete	Submit
Print	Terminate
Sync	Archive

NOTE

You must be connected to the Internet to “Submit” or “Sync.”

3.2 USING WIZARDS

Step-by-step wizards will guide you through the Registration and Enrollment processes.

3.3 REQUESTING A SYNCHRONIZATION LOG

In the synchronization authorization window, select “Generate a Synchronization Log” before clicking “Submit.” This will generate a report that shows how many records were inserted and updated.

3.4 RECEIVING ERROR MESSAGES

An error message is displayed if required information is left blank or a discrepancy is found. The message will describe the error and provide instructions for correcting the error.

3.5 INTERPRETING STATUSES

Each Registration, Enrollment, and Payment transaction is assigned a status. The status appears on the summary listings on the Registration, Enrollments, and Payments tabs.

3.5.1 Registration and enrollment statuses

- **Active**—the transaction has been completed, submitted to EFTPS, accepted, and processed.
- **Inactive**—the transaction has been archived and is not currently active. This applies to enrollments only.
- **Pending**—the transaction has been completed, submitted to EFTPS, and accepted but not processed.
- **Pending Error**—the transaction has been completed, submitted to EFTPS, and is pending but has an error. To correct the error, select the applicable Registration and click “Edit”; or, for enrollments, select the applicable enrollment and click “View.”
- **Pending Terminate**—the enrollment has been selected to be terminated, submitted to EFTPS, and accepted but not processed. This applies to enrollments only.
- **Rejected**—the transaction has been completed and submitted to EFTPS but has been rejected.
- **Submitted**—the transaction has been completed and submitted to EFTPS but is not yet accepted or processed by EFTPS.
- **Terminated**—the enrollment has been selected to be terminated, submitted to EFTPS, accepted, and processed. The enrollment is removed permanently from the EFTPS system.
- **Suspended**—the enrollment has been suspended because Shared Secrets information required by the Third Party Authorization disclosure was not provided. Payments that were made for this enrollment before the suspension will be processed, but no new payments can be made for an enrollment that is in a suspended status.

3.5.2 Payment statuses

- **New**—the payment has not been submitted to EFTPS. A payment in New status has no outstanding validation errors and may be edited.
- **New Cancel**—the payment has been selected to be canceled. Cancellation requests cannot be edited.
- **Rejected**—the payment was submitted to EFTPS and was rejected. The payment can be edited and resubmitted.
- **Rejected Cancel**—the cancellation request was rejected. The request must be resubmitted or deleted and re-created/resent.
- **Submitted**—the payment has been submitted and is currently being processed by EFTPS. The payment cannot be edited.
- **Submitted Cancel**—the cancellation request has been submitted.

3.6 REINSTALLING SOFTWARE

To reinstall your software, follow the procedures outlined in Section 2.1. After you reinstall the software, follow the procedures to synchronize Registration(s) first, then Enrollments, and then Payments.

NOTE

When you completely reinstall the software, all “Create Payment” dates default to the reinstallation date.

3.7 RECEIVING SOFTWARE UPDATES

EFTPS will notify you if updates are available through batch provider software messaging.

REGISTRATION

- Click columns to sort information in ascending/descending order.
- Drag and drop columns to reorder positions.
- Summary listing of entries.

The screenshot shows the EFTPS Registration application window. At the top left, there are menu items: "Login/Exit" and "Help". Below these is the "Five Main" navigation bar with tabs for "Registration", "User Administration", "Notifications", "Enrollments", and "Payments". The "Registration" tab is active, showing a "Registrations" table with columns: Registration ID, Description, Name, RTN, Account Number, Master Account, and Status. Below the table are buttons for "Add", "Edit", "Edit Fin", "Edit Master PIN", "Edit Password", and "Delete". To the right of these buttons are "Sync" and "Submit" buttons. Below the main table is a section for "Current Financial Information Changes" with columns: Registration ID, RTN, Account Number, Payment Type, Debit, Effective Date, Submit Date, and Status. At the bottom of the window, there are buttons for "Edit Fin Info", "Impact Check", "Cancel", and "Delete".

Labels in the image point to the following elements:

- Login/Exit Help
- Five Main
- Registration function buttons
- Banking information change
- Submit
- Sync

4.1 CREATING A NEW REGISTRATION

4.1.1 Step 1: Registration information

1. Click the Registration tab and click “Add.”
2. Enter a registration description. This description can be based on the types or groups of clients. For example: you might have a registration that contains your 1040ES clients only and enter “1040ES” as the description. You can have more than one registration.
3. Select Business or Individual (i.e., Sole Proprietor).

4.1.1.1 If you are already using EFTPS as a taxpayer—Express Registration

If you are already an EFTPS batch provider or have an active EFTPS enrollment as a taxpayer, you can speed up the Registration process by clicking the Express Registration box.

4.1.1.1.1 If you are using your existing batch provider registration

1. Click the Registration radio button.
2. Enter your existing batch provider ID.
3. Enter your existing Master PIN.
4. Enter a self-selected Master PIN for this registration.

4.1.1.1.2 If you are using your existing EFTPS taxpayer enrollment

1. Click the Enrollment radio button.
2. Enter the Taxpayer Identification Number (EIN or SSN) in the batch provider EIN/SSN field.
3. Enter your EFTPS online PIN.
4. Enter your EFTPS online Password.
5. Enter a self-selected Master PIN for this registration.
6. Skip to Step 3 to continue your registration.

4.1.2 Name and TIN

Enter your company name exactly as it appears on your tax documents and your Employer Identification Number (EIN) if you are registering as a business or your Social Security Number (SSN) if you are registering as an individual.

4.1.3 Contact information

Enter your contact information:

- Name
- Phone Number
- Address
- Email Address optional
- City, State, ZIP Code

The mailing address you enter will be verified by EFTPS and may be modified slightly to match IRS records.

4.1.4 Email notification

You can choose to receive an automated email notification of the receipt of your file. If more than one person should receive an email, you can enter up to three email addresses. If you do not wish to be notified through email, do not check either of these boxes. In that case, an EFTPS message will be sent to you using the software's messaging capability for each accepted and/or rejected file.

NOTE

The email notification does not serve as an acceptance of the file.

4.1.5 Step 5: Financial institution information

You can have tax payments made from:

- **Master Account**—complete the requested bank account information.
- **Each taxpayer’s account**—enter the bank account information when you enroll the client.
- **Master Account and taxpayers’ accounts**—enter both accounts as described above.

4.1.6 Step 6: Disclosure information

Check one or more of the Disclosure Authorization forms that you now have or will have on file with the IRS. To make federal tax payments on behalf of clients, you must have a signed authorization from the taxpayer.

4.1.7 Step 7: Authorization agreements

Language that indicates you are responsible for submitting and handling tax information on behalf of taxpayers is displayed.

NOTE

You must sign the Registration record with an electronic signature. Enter your name and title, signifying that you have the authority to execute this Registration.

4.1.8 To submit

After you enter the information, click the Registration tab. The tab displays your new Registration(s). You can review or change anything before submitting.

1. Click “Submit.”
2. Click “Submit” again to confirm.

The system will immediately respond with “accepted” or “rejected.” If “accepted,” your Registration Identification Number will be displayed on the summary with the Registration status of “Submitted.” Once submitted, the Registration is locked and cannot be edited until the process is complete.

4.2 YOUR REGISTRATION WELCOME PACKET

Within ten days after submitting your registration, you will receive via the mail a packet containing a registration status letter. This information is mailed to the contact name and address on your registration.

4.3 RECEIVING YOUR MASTER PIN

Within ten days after submitting your Registration, you will receive your Master PIN in a separate mailing, along with instructions to obtain a Master Password. You will use your Master Password to log on for secure access to EFTPS through your software.

Your Master PIN is mailed to the address of record on file with the IRS.

If you do not receive your Master PIN within ten days, call Customer Service at **1.800.945.0966**.

4.4 OBTAINING A MASTER PASSWORD

To obtain your Master Password, call **1.800.945.7337**.

You will be asked to enter your Registration Identification Number and Master PIN. The voice response system will read your Master Password.

After you obtain your Master Password from the VRS, you must change the Master Password to a new value:

1. Return to the main Registration tab.
2. Select the correct Registration.
3. Click "Edit Password"
4. Enter your Master PIN and Master Password.
5. Specify a New Master Password. (See Section 4.9)
6. Confirm the New Master Password.
7. Click "Submit."

After you have changed your Master Password:

1. Return to the main Registration tab.
2. Select the correct Registration.
3. Click "Sync."
4. Enter your Master PIN and Master Password.
5. Click "Submit."

NOTE

Your Master Password will expire after six months of inactivity and one year from password assignment. You can reset an expired password by going to the Registration tab and clicking "Edit Password". (See Section 4.9)

4.5 CREATING ADDITIONAL REGISTRATIONS

You can maintain several Registrations. For example: you may want one registration that contains all your business clients and a separate registration that contains all your individual clients.

1. Click the Registration tab.
2. Click “Add.” Follow the steps to complete a new Registration. (see Section 4.1)

You will receive a new Master PIN and must obtain a new Master Password for each registration you add. To obtain a new Master Password, call **1.800.945.7337**.

4.6 EDITING A REGISTRATION

You can edit all registration information before submitting to EFTPS. Once the registration has been successfully submitted and processed, you can edit the registration information (except the financial information) using the “Edit” button. To do that, you must use the “Edit Fin” feature. (see Section 4.7)

4.6.1 To edit a registration

1. Click the Registration tab.
2. Click on the Registration you wish to edit.
3. Click “Edit.” Make your changes. When finished, click “Save.”
5. The Registration’s status will appear as Active–Edited on the summary list of registrations.

4.6.2 To submit the registration changes to EFTPS

1. Select Registration.
2. Click “Submit.”
3. Enter your Master PIN and Master Password.
4. Click “Submit” to confirm.

4.6.3 To synchronize your registration

1. Select the Registration you wish to synchronize.
2. Click “Sync.”
3. Enter your Master PIN and Master Password.
4. Click “Submit.”

5. When synchronization is complete, click “OK” to return to the main Registration tab.

The status of your Registration will appear as “Active” and can be used to enroll your clients.

4.7 EDITING A REGISTRATION’S FINANCIAL INFORMATION

4.7.1 To edit a registration’s financial information

1. Click the Registration tab.
2. Select the Registration you wish to edit.
3. Click “Edit Fin” and edit.
4. Click “Save.”

The change will appear as a new row in the bottom half of the Registration workspace.

4.7.2 To submit the financial information changes to EFTPS

1. Click on the change that you wish to send.
2. Click “Submit.”
3. Enter your Master PIN and Master Password.
4. Click “Submit.”

NOTE

You cannot change the account if you are removing the Master Bank Account and you have enrollments that use only this account.

4.7.3 To view the transactions impacted by the financial information change:

1. Click on the change that you wish to review.
2. Click “Impacts” in the changes to banking information section of the window.

NOTE

You cannot change the account if you have future payments that are scheduled to be made from the account you are changing. However, you can:

1. Select a different change effective date (beyond when you have payments scheduled);
or
2. Cancel the pending payments and reschedule them for a date after your new account will take effect.

4.8 EDITING A MASTER PIN

1. Click the Registration tab.
2. Click on the Registration you wish to edit.
3. Click "Edit Master PIN."
4. Enter the information. Your new Master PIN must be four numbers and cannot be 0000 or 9999.
5. Click "Submit."
6. Enter your current and new Master PIN and Master Password.
7. Click "Submit."

The Master PIN changes immediately. Use the new Master PIN the next time you synchronize or submit.

4.9 EDITING A MASTER PASSWORD

- Your Master Password must be at least twelve characters long but no more than thirty characters long.
- Passwords must comply with the following:
 - Must contain at least one uppercase letter (A, B, C, etc.)
 - Must contain at least one lowercase letter (a, b, c, etc.)
 - Must contain at least one number (1, 2, 3, etc.)
 - Must contain at least one of the following characters (!, @, #, \$, *, +, -)
 - Must not contain double characters (no two consecutive characters can be the same)
 - Must not be the same as any of the five previous passwords used

NOTE

You will have a unique Master Password for each EFTPS Master PIN. Do not disclose your Master Password or PIN to unauthorized individuals.

4.10 CHOOSING YOUR PAYMENT METHODS

You can make payments from a taxpayer's banking account, from a Master account that you maintain, or both.

- To make payments from your clients' banking accounts, enter their banking account information when you enroll them.
- To make payments from a Master Account, enter your financial institution information during Registration.

4.10.1 To change the payment method

1. Select the Registration or Enrollment record from the main Registration or Enrollment tab.
2. Click “Edit Fin.”
3. Edit the information.
4. Click “Save.”

4.10.2 To submit the changes to EFTPS

1. Click “Submit” on the main Registration or Enrollment tab.
2. Enter your Master PIN and Master Password.
3. Click “Submit.”

ENROLLMENTS

- Click columns to sort information in ascending/descending order.
- Drag and drop columns to reorder positions.

Five Main Tab

Subtabs

Active Registration

Summary listing of entries

Submit button

Enrollment Function buttons

Type	EIN/SSN	Name	Remit Method	Master Account	RTN	Bank Account	Status	Action	Error Id
Business	123456789	ABC Company	Debit		107002763	00633322	New	Add	

5.1 CREATING AN ENROLLMENT

1. Click the Enrollments tab.
2. Select the Registration to be used for this enrollment.
3. Click "Add."

5.1.1 TIN and Name

1. Select Business or Individual.
2. Enter the name and EIN or SSN.
3. Check the box to indicate that you have a Disclosure Authorization on file for the client (if applicable).

5.1.2 Disclosure authorization

Select the authorization you will have on file for this taxpayer. If you have a Third-Party Authorization on file, you must complete the Shared Secrets information at the bottom of the page.

Each taxpayer for whom you will be submitting payments is required to provide authorization permitting the batch provider to exchange information with the IRS. An electronic Third-Party Authorization may be completed during this enrollment, which will generate an EFTPS Individual Enrollment with Third-Party Authorization, Form 9783T. This authorization requires a five-digit, self-selected Signature PIN. The taxpayer's date of birth and prior year's adjusted gross income must be provided for authentication. This electronic authorization will be transmitted to EFTPS.

5.1.3 Contact information

Enter the taxpayer contact information:

- Address
- City, state, ZIP code
- Telephone number
- Email (optional)

5.1.4 Financial information

Select Debit or Credit:

- Debit (for business and individual taxpayers). Select Taxpayer Account or Master Account:
 - Taxpayer Account: enter the client's banking account information
 - Master Account: indicate that you will use the banking account information you supplied in your batch provider registration
- Credit (for business taxpayers only) clients enrolled using the credit method of payment cannot make payments using the batch provider software. Contact your financial institution for assistance with making payments through the credit method.

5.1.5 Optional tax form limits

You can set amount limits for a client's tax forms.

For example: If a client's Form 941 payment usually does not exceed \$5,000, you might enter that as a limit. When making a Form 941 payment for that client, a warning message will appear if the payment exceeds \$5,000. You can:

1. Abandon the payment.
2. Override the amount limit warnings and proceed with payment.
3. Change the limits by editing the taxpayer's enrollment record and submitting the change to EFTPS. (see Section 5.2)

5.1.6 Optional self-selected enrollment PIN/system-generated taxpayer inquiry PIN

Enter a self-selected PIN to protect unauthorized payments for this client. You can use the same PIN for multiple clients. The Enrollment PIN must be four numbers and cannot be 0000 or 9999.

- If you do not enter a PIN, the system will generate one for you.

As part of the taxpayer enrollment, the system will auto-generate an inquiry PIN for your client.

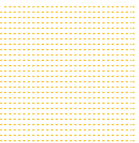
- The Taxpayer Inquiry PIN will allow the client to check his or her payment history at EFTPS.gov or by phone. The Inquiry PIN will not give the taxpayer the ability to make or cancel payments.
- EFTPS will send your client a unique mailing:
 - Explaining the reasons for receiving the Inquiry PIN letter and the ability to view payment history online or by phone.
 - Including a PIN letter and instructions on how to obtain an Internet Password.
- To obtain an Internet Password, clients will call **1.800.982.3526**.
- Clients should have their PIN letter available when they call to enter:
 - Taxpayer Identification Number (EIN or SSN)
 - PIN
 - Last eight numbers of the Enrollment Number

NOTE

If the enrollment requires third-party authorization, the 9783T form will be presented for printing and signing after this step.

5.1.7 To submit entered enrollments

1. Click the Send Enrollments tab, which will display a list of the newly entered enrollments. You can review or change anything before submitting.
2. Select the enrollments to be submitted.
3. Click “Submit.”
4. Enter your Master PIN and Master Password.
5. Click “Submit.”



5.1.8 To synchronize enrollments

You should synchronize your enrollment database 15–20 minutes after you submit an enrollment.

1. Click the Enrollment tab.
2. Click the Enrollment Inquiry subtab.
3. Select the applicable Registration.
4. Click “Sync.”
5. Enter your Master PIN and Master Password.
6. Enter the date the enrollments were submitted in “From Date.”
7. Click “Submit.”

5.2 EDITING ENROLLMENT INFORMATION

You can change:

- Contact Information (This information is not sent to EFTPS and is for your use only. You do not have to submit changes to EFTPS.)
- Payment Thresholds
- Enrollment PIN
- Disclosure Authorization Information

5.2.1 To edit an existing enrollment

1. Click the Enrollment main tab.
2. Select the correct subtab:
 - a. If this enrollment has not been sent to EFTPS, click the Send Enrollments subtab.
 - b. If this enrollment has been sent to EFTPS, click the Enrollment Inquiry subtab.
3. Select the applicable Registration.
 - a. If you are on the Enrollment Inquiry subtab, search for the enrollment you wish to edit.
4. Select the enrollment.
5. Click “Edit.”
6. Make changes and click “Save.”

5.2.2 To submit changes

1. Click the Send Enrollments subtab.
2. Select the edited enrollment.
3. Click “Submit.”
4. Enter your Master PIN and Master Password.
5. Click “Submit.”

The next time you synchronize enrollments the changes will appear in the taxpayer’s enrollment record.

5.3 EDITING ENROLLMENT FINANCIAL INFORMATION

You can edit:

- Payment Method (Credit or Debit)
- Master or Taxpayer account
- Bank Routing and Transit Number (RTN)
- Bank Account Number
- Enrollment PIN

5.3.1 To edit the financial information

1. Click the Enrollments main tab.
2. Select the correct subtab:
 - a. If this enrollment has not been sent to EFTPS, click the Send Enrollments subtab.
 - b. If this enrollment has been sent to EFTPS, click the Enrollment Inquiry subtab.
3. Select the applicable Registration.

Select the enrollment you wish to edit and click “Edit.” A tabbed summary of the taxpayer’s editable financial information will display.

4. Make changes and click “Save.”

NOTE

Changing the financial information creates a new enrollment for the taxpayer.

5.3.2 To submit the financial information changes to EFTPS

1. Click the Send Enrollments subtab.
2. Select the edited enrollment.
3. Click “Submit.”
4. Enter your Master PIN and Master Password.
5. Click “Submit.”

The next time you synchronize enrollments the changes will appear in the taxpayer’s enrollment record.

5.4 DELETING AN ENROLLMENT

You can delete enrollments that have **not** been submitted to EFTPS only.

1. Click the Enrollments main tab.
2. Select the enrollment you wish to delete.
3. Click “Delete.”
4. Click “Yes” to confirm.

5.5 TERMINATING AN ENROLLMENT

Terminating an enrollment permanently removes it from EFTPS.

5.5.1 To terminate an enrollment

1. Click the Enrollments tab.
2. Click the Enrollment Inquiry subtab.
3. Enter search criteria to find the enrollment you wish to terminate.
4. Click “Search.”
5. Select the enrollment you wish to terminate.
6. Click “Terminate.”
7. Click “Yes” to confirm.

5.5.2 To submit a terminated enrollment to EFTPS

1. Click the Send Enrollments subtab.
2. Select the terminated enrollment.
3. Click “Submit.”
4. Click “Yes” to confirm.

5.6 ARCHIVING AN ENROLLMENT

You can archive inactive taxpayers within your database to streamline enrollment and payment reports. Archived (Inactive) enrollments will not be included on standard inquiry search results. However, you can still make payments on an archived enrollment.

Inactive enrollments can be made active again (and used immediately). The active/inactive status is only a designation of an enrollment within your batch provider software and does not affect the enrollment’s status with EFTPS.

5.6.1 To archive an enrollment:

1. Click the Enrollments tab.
2. Click the Enrollment Inquiry subtab.
3. Enter search criteria to find the enrollment you wish to archive (make Inactive).
4. Click “Search.”
5. Select the enrollment you wish to archive.
6. Click “Archive.”
7. Click “Yes” to confirm.

5.7 VIEWING ARCHIVED ENROLLMENTS

1. Click the Enrollments tab.
2. Click the Enrollment Inquiry subtab.
3. Select “All Archived Enrollments” from the query drop-down field.
4. Click “Search.”

5.8 ACTIVATING ARCHIVED ENROLLMENTS

1. Click the Enrollments tab.
2. Click the Enrollment Inquiry subtab.
3. Select “All Archived Enrollments” from the query drop-down field.
4. Click “Search.”
5. Select the enrollment you wish to make Active.
6. Click “Un-Archive.”
7. Click “Yes” to confirm.

5.9 PERFORMING ENROLLMENT INQUIRIES

You can query your EFTPS enrollment database by using a variety of search criteria. This function allows you to create a group of enrollments and print a report or export the information to another file format.

1. Click the main Enrollments tab.
2. Click the Enrollment Inquiry subtab.
3. Click the Query drop-down arrow to display the available searches:
 - a. General
 - b. All Active
 - c. All Archived Enrollments
 - d. Requiring Disclosure Authorization

The search criteria that can be used for a General Query are:

EIN/SSN
Taxpayer Name
RTN
Bank Account Number
Status
User ID
Processed (Enrollment) Date

4. Enter your search criteria and click “Search.”
5. You can View, Edit, Export, Archive, Terminate, or Print any or all of the enrollment results.

5.10 IMPORTING EXISTING ENROLLMENTS FROM A TEXT FILE

1. Click the Enrollments tab.
2. Click “Import.”
3. Use only Fixed Width Field Format. (see Appendix A for record layout format)
4. Select the file you wish to import from the existing files on your computer.
5. Click “Open” to import the file into your EFTPS Enrollments database and display the information on the Send Enrollments tab.

5.11 EXPORTING ENROLLMENTS TO A FILE

1. Click the Enrollments tab.
2. Click the Enrollment Inquiry subtab.
3. Perform query (see Section 5.9) to display the enrollments you wish to export to a file.
4. Select the enrollments to export.
5. Click “Export.”
6. Choose the appropriate format:
 - a. Fixed Width Field Format.
 - b. Comma-Delimited Format.
7. Select an existing file from the displayed file browser or create a new file for the enrollment information.
8. Click “Open” to export the enrollments to the selected or new file. (see Appendix A for record layout format)

5.12 REVOKING A THIRD-PARTY AUTHORIZATION

A taxpayer can revoke a Third-Party Authorization agreement. To terminate the enrollment and revoke the third-party authorization, the taxpayer can write “REVOKE” across Form 9783T and send a copy of the form to the batch provider and/or EFTPS Customer Service. The copy must include a current taxpayer signature.

PAYMENTS

6.1 PAYMENT SCREEN OVERVIEW

- Click columns to sort information in ascending/descending
- Drag and drop columns to reorder positions.

The screenshot shows the EFTPS Batch Provider interface. At the top, there are tabs for 'Registration', 'User Administration', 'Notifications', 'Enrollments', and 'Payments'. Below the tabs, there are buttons for 'Send Payments', 'Cancel Payments', and 'Payment Inquiry'. The main area is titled 'Payments to Submit' and contains a table with columns: Status, TIN, Taxpayer T..., Taxpayer Name, Tax Type, Payment Amount, Tax Period, Settlement, Created Date, Master Acco..., and Error Id. Below the table, there is a 'Check Box to Make all Payments from Bulk Master Account' and a 'Totals for Selected Payments' section showing 'Number of Selected Payments: 0' and 'Dollar Amount of Selected Payments: \$0.00'. At the bottom, there are buttons for 'Add', 'View', 'Edit', 'Delete', 'Import', 'Copy', 'Paste', 'Duplicates', and 'Submit'. Annotations include: 'Payment Sub tabs' pointing to the top tabs; 'Active drop-down list' pointing to the 'Status' dropdown; 'Check to make Bulk payments from a Master Account' pointing to the checkbox; 'Total number of payments selecte' pointing to the 'Number of Selected Payments' field; 'Total amount selecte' pointing to the 'Dollar Amount of Selected Payments' field; 'Payment Function' pointing to the bottom buttons; and 'Submi' pointing to the 'Submit' button.

Payment Sub tabs

Active drop-down list

Check to make Bulk payments from a Master Account

Total number of payments selecte

Total amount selecte

Payment Function

Submi

6.2 CREATING PAYMENTS

- Deadline for tax payments: **8 p.m. ET** at least one calendar day before the due date.
- You can send up to 5,000 payments in one transaction.

6.2.1 To add a payment

1. Click the Payments tab.
2. Select the applicable registration.
3. Click "Add."
4. Enter or select the applicable taxpayer's EIN/SSN. To select:
 - a. Click "Select" next to the EIN/SSN field.
 - b. Either select an active enrollment from the list or enter all or part of an EIN/SSN and click "Go" to search for the specific EIN/SSN.
5. Highlight the EIN/SSN and click "Select." The remaining taxpayer information is prefilled.
6. Select the Tax Form.
7. Select the Tax Type.

The Payment Detail will appear.

8. Enter the payment amount, separating dollars and cents with a decimal point.
9. If applicable, select the Tax Period Month from the drop-down menu. Enter the Tax Period Year for the payment.
10. Enter the Settlement Date or select the future date from the calendar provided.

If you wish to store the current payment details as the default information for this taxpayer, check the Lock This Transition box at the bottom of the screen. Otherwise, the last payment made for this taxpayer will be displayed the next time you add a payment for the client.

11. Click "Save."
 - a. The payment appears in the Send Payments tab.
 - b. You can View, Edit, or Delete a payment prior to submitting. After submitting, the payment is locked.

NOTE

Payment data can be imported using the Import functionality. (see Section 6.4)

6.2.2 To submit entered payments

1. Review the:
 - a. Total number of payments.
 - b. Total dollar amount.
2. If you wish the payments to be withdrawn as a single transaction from your Master Account, click the Bulk Debit Payments check box. If you do not check this box, each transaction will generate a separate record in EFTPS and your banking account.

3. Click “Submit.”
4. Enter your Master PIN and Master Password.
5. Click “Submit.”

NOTE

You can make payments as frequently as necessary.

6.2.3 To synchronize payments

1. Click the Payment Inquiry subtab.
2. Click “Sync.”
3. Enter your Master PIN and Master Password.
4. The “Date From:” field must be equal to or before the date that the payments were submitted.
The “Date To:” field defaults to the current date.
5. Check the box to create a Synchronization Log.
6. Click “Submit.”
7. Click “OK” to close the sync screen.

NOTE

Payments in “Scheduled” status that were made before an enrollment was suspended will be processed as normal. However, no new payments can be made for an enrollment that is suspended.

6.3 SYNCHRONIZING PAYMENT HISTORY

Avoid lengthy processing time by entering a time frame around payment history synchronization requests, i.e., “January 2007–March 2007.” As your payment history grows, the synchronization time will increase and require significant time to process. The EFTPS system will cue up your request, but if your request has not been processed after thirty minutes, it will be dropped, and you will need to make another request.

6.4 IMPORTING PAYMENT DATA

The batch provider software allows you to import payment information from another file.

1. Click “Import” on the Send Payments tab.
2. Use only Fixed Width Field Format. (see Appendix B for record layout format)
3. Select the file you wish to import from the existing files on your computer.
4. Click “Open” and the file will be imported into your EFTPS Payments database and displayed on the Send Payments tab.

NOTE

Your imported files must be in the same format as the data stored in the software. (see Appendix B)

6.5 CHECKING FOR DUPLICATE PAYMENTS

1. Click “Duplicates” on the bottom of the Send Payment subtab.
2. The system will highlight any payments considered to be duplicates.
3. You can change payment information by editing, overriding, or deleting the duplicate payments.
4. Click “Refresh” to remove the duplicates from the displayed payments.

6.6 CANCELING PAYMENTS

You can cancel a scheduled payment up until 8 p.m. ET two business days before the settlement date.

1. Click the Payments tab.
2. Click the Cancel Payments subtab.
3. Select the applicable Registration. All of that Registration’s payments that are eligible for cancellation will be displayed.
4. Select the payment(s) you wish to cancel.
5. Click “Cancel.”
6. Enter your Master PIN and Master Password.
7. Click “Submit.”
8. Click “Refresh” on the main Cancel Payments screen after the payment cancellation transmission is complete.
 - a. The payment status will appear as “Submitted.”
 - b. When you synchronize your payments after the cancellation date, the status of the payment will appear as “Canceled.”

6.7 PERFORMING PAYMENT INQUIRIES

1. Click the Payments tab.
2. Click the Payment Inquiry subtab to query your payment database for one or more of the search criteria:
 - a. General Query (all search criteria can be used)
 - i. EIN/SSN
 - ii. Tax Form
 - iii. EFT Number
 - iv. Status of the Payment (returned, scheduled, etc.)
 - v. Payment Amount
 - vi. User ID (any of the user IDs you have created)
 - vii. Settled Date (or range of dates)
 - b. Search by Time frame (30-60-90-180-365 days or 16 months)
3. Select the applicable Registration.
4. Click “Sync.”
5. Enter your Master PIN and Master Password.
6. Enter a date in the “From Date” field.
7. Click “Submit.”
8. After synchronization, enter your search criteria and click “Search.”

You can:

- Highlight the payment(s) you wish to view.
- Sort payments by column headings.
- Print or export all payments.
- Copy any payment.

6.8 EXPORTING PAYMENTS TO A FILE

1. Click the Payments tab.
2. Click the Payment Inquiry subtab.
3. Perform your query (see Section 6.7) to display the payments you wish to export.
4. Click “Export.”
5. Choose the appropriate format:
 - a. Fixed Width Field Format. (see Appendix B for record layout format)
 - b. Comma-Delimited Format. (see Appendix C for record layout format)
6. Select an existing file from your browser or create a new file for the enrollment information.
7. Click “Open” and the file will be exported to the specified location.

6.9 COPYING AND PASTING PAYMENTS

1. Highlight the payments in the Payments Inquiry tab.
2. Click “Copy.”
3. Click “Paste” in the Send Payments tab.

6.10 MAKING PAYMENTS BY PHONE

If you are away from your computer and need to make a payment for a client, make your payment by phone. You need the payment information and the taxpayer’s enrollment TIN and PIN. The payments you make by phone will appear in your EFTPS database when you synchronize.

To make a payment via phone, call **1.800.555.3453**.

The system is available 24 hours per day and 7 days per week.

6.11 AFFORDABLE CARE ACT (ACA) SHARED RESPONSIBILITY PAYMENTS

The Affordable Care Act contains comprehensive health insurance reforms and includes tax provisions that affect individuals, families, businesses, insurers, tax-exempt organizations and government entities. These [tax provisions](#) contain important changes, including how individuals and families file their taxes. The law also contains benefits and responsibilities for other organizations and employers.

6.11 Confirmation Email

Payers can Opt In/Opt out of receiving Confirmation emails while making payments through EFTPS. Confirmation email option is easy. To get started supply a valid email address during the payment process. There are 5 generated responses.

Confirmation of Scheduled Transaction – You have scheduled a transaction.

Confirmation of Cancelled Transaction – You have cancelled a transaction.

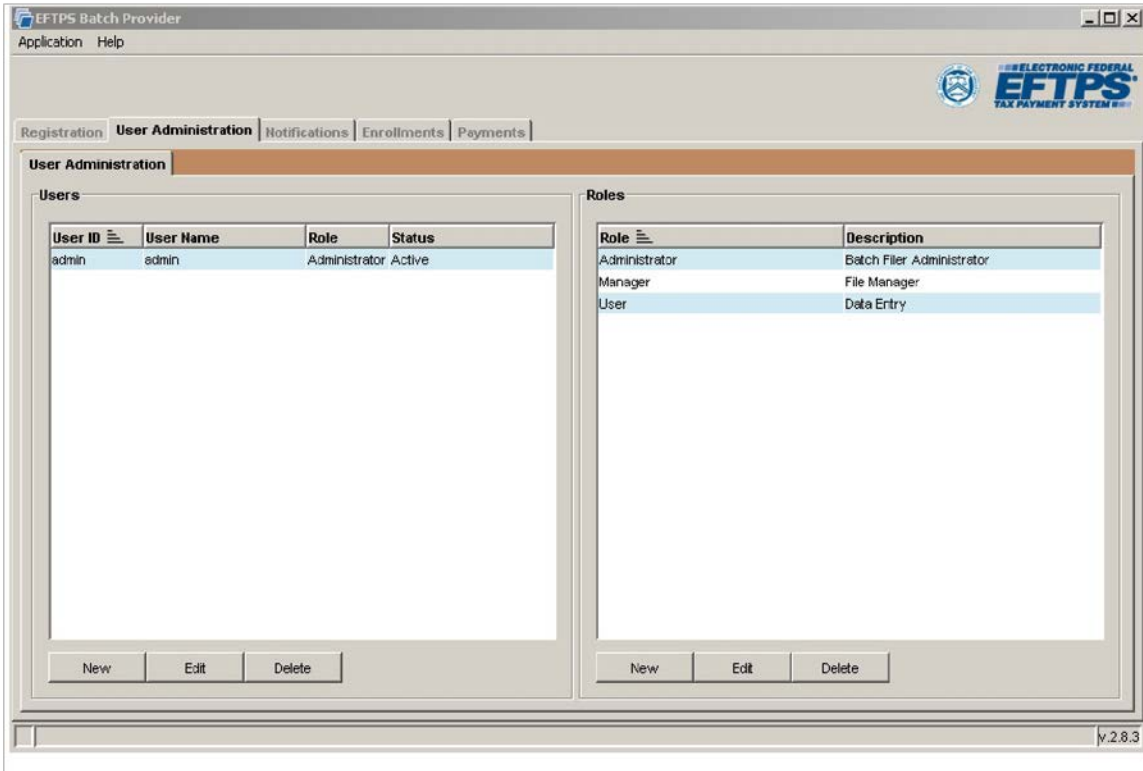
Notification of Returned Transaction – You IRS EFTPS transaction could not be processed.

Reminder of Scheduled Transaction – You have scheduled a transaction.

Confirmation of Modified Email Address – The email address associated with your EFTPS profile has been updated.

USER ADMINISTRATION

The User Administration section allows you to set roles and responsibilities for multiple users.



7.1 DETERMINING USER ROLES

If more than one person will be using your software, you may want to define the access levels for each user. This feature:

- Allows you to control who can view, update, add, or remove payments from the database.
- Allows you to set User Passwords for each user.

The software contains three predefined roles:

1. “Admin” (program administrator)—has full access to the complete functionality of the program.
2. “Manager”—can do everything except set up the software.
3. “User”—can view and update information but cannot add or remove information.

7.2 ADDING USERS AND DEFINING ROLES

7.2.1 To add a user

1. Click the main User Administration tab.
2. Click “New” under Users.
3. Create and enter a unique User ID for this user. User IDs can be descriptions or nicknames.
4. Enter the User’s full name.
5. Select the User Role.
6. Set a User Password.
7. Click “Save.”

7.2.2 To define a role

1. Click the main User Administration tab.
2. Click “New” under Roles and enter the Role Name (Administrator, Manager, or User).
3. Enter a description for the Role that defines the User’s job description.
4. Check the assignments for the Role, i.e., what functions they can perform within the software for Setup, Registration, Enrollment, Payment, File Query, and Reporting.
5. Choose Add, Delete, Edit, or View for each function.
6. Click “Save.”

7.3 EDITING AND DELETING USERS AND ROLES

1. Highlight the User or Role.
2. Click “Edit” or “Delete.” 3. Follow the instructions.

NOTIFICATIONS

The Notifications section contains a tab showing any messages you may receive from EFTPS and a calendar for making notes, sending notes to other users, and indicating payment dates.

8.1.1 To check for new messages

1. Click the Notifications tab.
2. Click the Messages subtab.
3. Choose the applicable Registration.
4. Click “Sync.”
5. Enter your Master PIN and Master Password.
6. Click “Submit.”

Any new messages will be displayed after previous current messages.

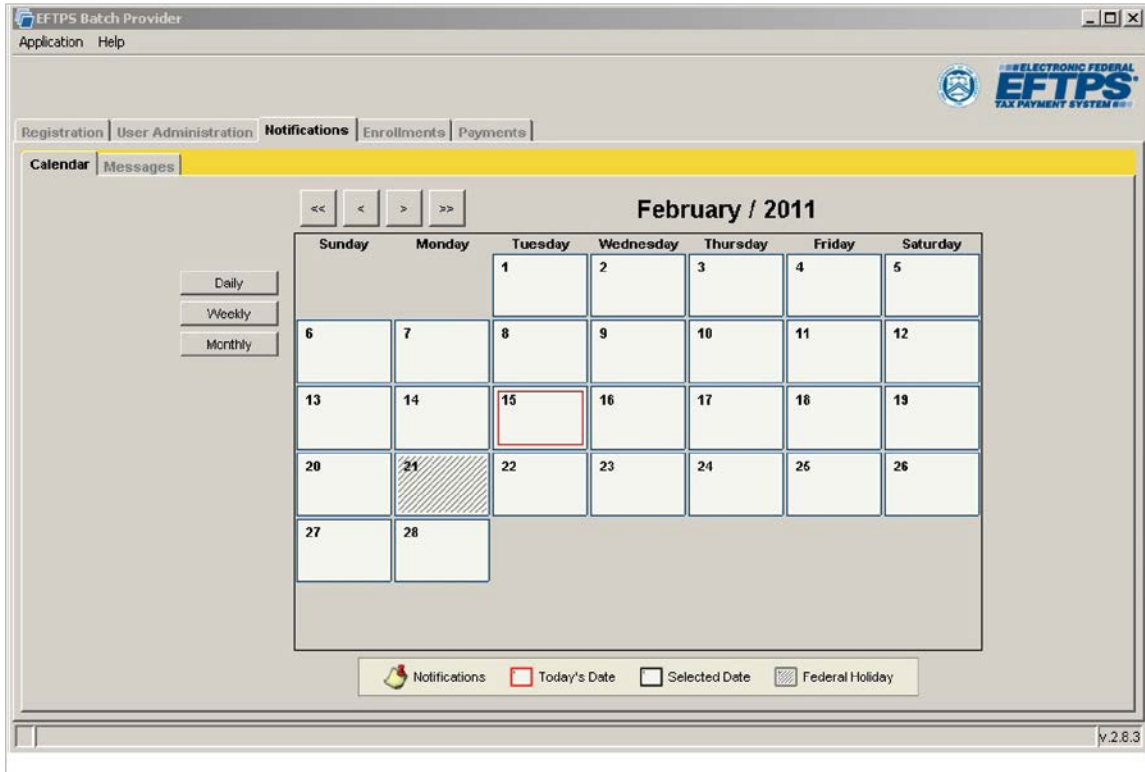
8.1.2 To read messages

1. Click the Notifications tab.
2. Click the Messages subtab.
3. Select the message you wish to read.
4. Click “View.”

8.1.3 To delete a message

1. Click the Notifications tab.
2. Click the Messages subtab.
3. Select the message you wish to delete.
4. Click “Delete.”

8.2 CALENDAR



The Calendar allows you to:

- View dates by month, week, or day for up to three years in advance.
- Use the arrows at the top of the calendar to go forward or back by month (< >) or by year (<< >>).
- View by week and day.
- Add notes or appointments to any given date by double-clicking on the date. A scheduling window will appear, where you can record activities or schedule future activities.
- View federal holidays and notes you have added.

Double-click on any date and a separate window will open to reveal the information for that date.

8.3 EMAIL COMMUNICATIONS AND SECURITY

You will only receive email notifications confirming successful transmissions. You will not receive emails indicating successful transaction processing.

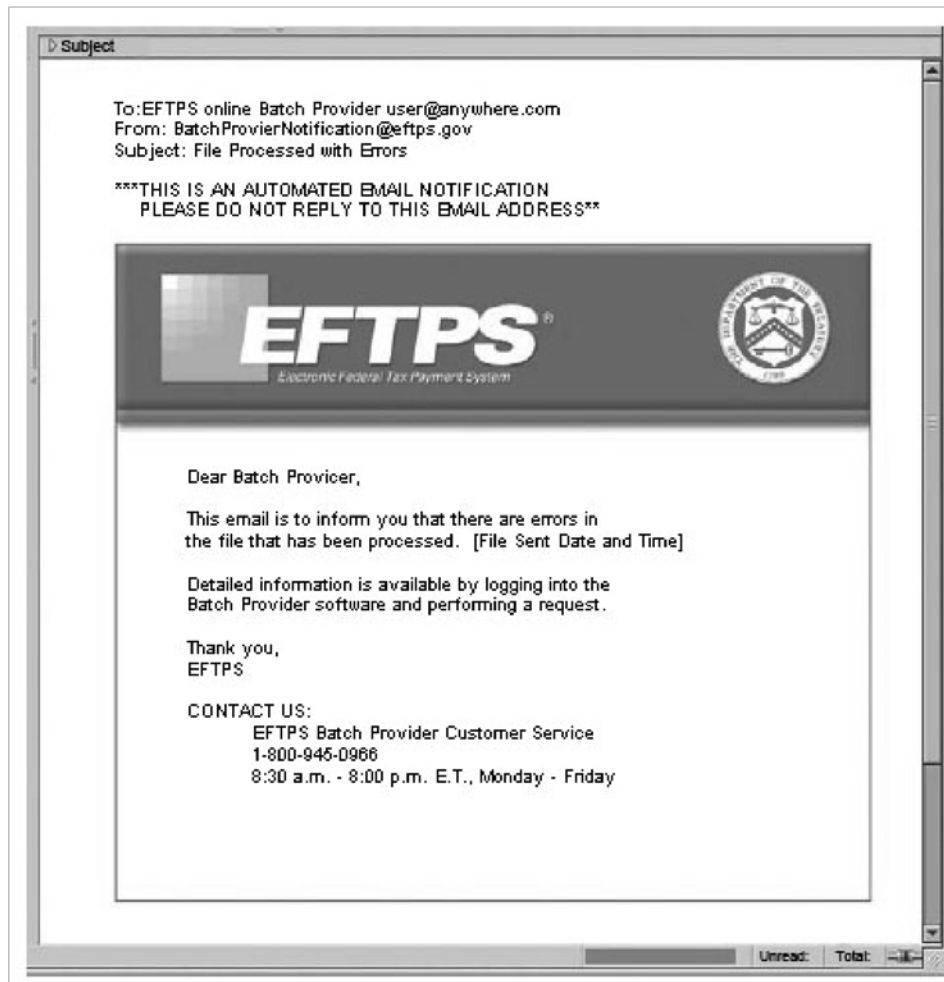
NOTE

[Sync your payments to receive your EFT numbers.](#)

As a matter of security

- You will not receive email messages from EFTPS containing any specific account information, such as Registration ID, PIN, or dollar amounts.
- EFTPS will not request account or personal information over email.
- If you receive an email that appears to come from EFTPS and it requests personal information, contact EFTPS batch provider Customer Service at **1.800.945.0966** immediately.

The email messages you will receive from EFTPS will look like this:



TROUBLESHOOTING

PROBLEM	POSSIBLE SOLUTION
Annual Expiration of Master Password	<p>If your Master Password expires, you will receive a message indicating that “Your Master Password has expired and must be changed in order to proceed...”</p> <p>You can reset an expired password by going to the Registration tab and clicking “Edit Password”.</p>
Registration Failed/Invalid	<p>If you receive a message or notification that your Registration is invalid, check the following:</p> <ul style="list-style-type: none"> • The business name was entered exactly as it appears on your tax return. • Your address is correct. • The TIN you used is the correct TIN for the business name you entered.
Rejected Files	<p>If you receive a message or notification that your enrollment or payment file(s) were rejected, log on to the software and perform a Sync request to receive further details.</p>
Files/Dates Won't Synchronize	<p>If you attempted to synchronize your data and the process failed, check the following:</p> <ul style="list-style-type: none"> • You are connected to the Internet. • The proper Registration ID, Master Password, and Master PIN were entered. • The “From Date” field includes the date that the enrollment or payment was submitted. • The Registration you selected is Active.
Cannot Import/Export	<p>If you have problems Importing enrollment or payment files, check the following:</p> <ul style="list-style-type: none"> • The selected Import file is formatted as Fixed Field Width. • You are Importing a Text (.txt) file. • Review the File Formats in the Appendix. <p>If you have problems Exporting Payment files, check the following:</p> <ul style="list-style-type: none"> • The payment(s) to be exported are highlighted. • The “.txt” extension appears at the end of the file name.
Cannot Cancel Payment	<p>Only payments that are scheduled to settle at least two business days in the future may be canceled. Check the following:</p> <ul style="list-style-type: none"> • The payment you wish to cancel is highlighted. • You are connected to the Internet. • You have clicked “Cancel” in the Cancel Payments tab.
Cannot Edit Information	<p>The software has three predefined Roles:</p> <ol style="list-style-type: none"> 1. “Admin” (program administrator)—has full access to the complete functionality of the program. 2. “Manager”—can do everything except set up the software. 3. “User”—can view and update information but cannot add or remove information. <p>You may not have the correct privileges assigned to edit information.</p> <p>To verify that you have the authority to View, Update, Add, or Remove information, check the following:</p> <ol style="list-style-type: none"> 1. Click the User Administration tab. 2. Highlight your Role. 3. Click “Edit.” <p>Review the privileges that have been assigned to you. If you are not assigned as the Administrator, you cannot make changes to the Role. Contact your Administrator.</p>

TROUBLESHOOTING

PROBLEM	POSSIBLE SOLUTION
Lost or Misplaced Master Password or Master PIN	<p>If you lose, forget, or misplace your Master Password, call the batch provider VRS to obtain a new Master Password. Call 1.800.945.7337. Have your Registration ID and PIN available when you call.</p> <p>If you lose, forget, or misplace your Master PIN, call EFTPS batch provider Customer Service to request a new PIN. Customer Service is available Monday–Friday, 8 a.m.–8 p.m. ET. Call 1.800.945.0966. Have your Registration ID available when you call.</p>

GLOSSARY

- **ACH Trace Number**—Unique number found on every EFTPS debit payment.
- **Administrator's User ID and Password**—ID and Password you create when you install the software. These are the keys for administering the software, not for sending or receiving information from EFTPS.
- **Archive**—You can archive—or make inactive—enrollments within your database. This allows you to refine enrollment and payment reports, because inactive enrollments will not be displayed on the normal inquiry search results. Inactive enrollments can be made Active again (and used immediately). The Active/Inactive status is only a designation of an enrollment within your batch provider software and does not affect the enrollment's status with EFTPS.

Note: Enrollments with outstanding payments (either New or Submitted) cannot be archived. Archived enrollments will not display; however, the PIN will remain active until the enrollment is terminated..
- **Database Admin Password**—Password associated with a local database admin account that is used by the Batch Provider software to interact with the locally installed database.
- **Database Encryption Password**—Password that serves as the encryption key associated with the local Batch Provider database and is used to encrypt its stored data.
- **EFT Number**—Unique Electronic Funds Transfer number assigned to payments and cancellations for tracking purposes. This number is your receipt for the transaction.
- **EIN**—Employer Identification Number. Unique nine-digit number assigned by the IRS and used to identify a business taxpayer.
- **Email Notification**—Receiving email messages is optional. After you send enrollments or payments to EFTPS, the system will respond with a secure email with the status of your file (accepted or rejected). You can enter up to three email addresses during Registration.
- **Enrollment PIN**—Every enrollment has a unique Personal Identification Number (PIN) for added security. The PIN can be self-selected or you can choose to have EFTPS assign a PIN. A PIN must be four numbers, cannot be 0000 or 9999, and cannot duplicate another TIN/PIN combination within the system.
- **Express Registration**—Is available only if you have an existing batch provider Registration or an EFTPS online enrollment. Express Registration allows you to generate a new Registration using the name and TIN of an existing EFTPS online enrollment or batch provider Registration.
- **Internet Password**—If you want a client to be able to view his or her payment history at EFTPS.gov, you will need to request that a Taxpayer Inquiry PIN be sent to the client. After receiving that PIN, the client will go to EFTPS.gov and create an additional credential, an Internet password.
- **Master Account**—You can choose to make payments for clients from a single Master Bank Account that you maintain.
- **Master Password**— The Master Password is used with your Registration ID and Master PIN so you can send and receive EFTPS transactions securely. Master Passwords must be 12–30 characters long, containing at least one uppercase letter, one lowercase letter, one number, one special character (!, @, #, \$, *, +, -), and no repeating characters, and cannot be the same as any of the five previous passwords used.

- **Master PIN**—A four-digit Personal Identification Number assigned by EFTPS and used with the Master Password to protect your batch provider account. You are responsible for protecting the Master PIN. Do not give this information to anyone and store any references to this PIN in a secure location. A PIN must be four numbers and cannot be 0000 or 9999.
- **Registration Authorization Information**—Window that appears before you send information to EFTPS. It asks for your Registration ID, Master PIN, and Master Password. By entering this information, you are authorizing the transaction.
- **Role**—The software provides three predefined roles (“Admin,” “Manager,” and “User”) and that each has a specific level of responsibilities and authority.
- **RTN**—Routing Transit Number. A unique nine-digit bank identification number that is part of every ACH transaction and identifies a specific financial institution.
- **SSN**—Social Security Number. The unique nine-digit taxpayer identification number assigned to an individual taxpayer by the IRS.
- **Settlement Date**—Business date on which funds are withdrawn from the designated bank account. Payments must be scheduled by **8 p.m. ET** at least one calendar day before the settlement date.
- **Submit**—When you provide information to EFTPS through the software and a secure Internet connection.
- **Sync**—When you receive current enrollment and payment information from EFTPS through a secure Internet connection.
- **Taxpayer Inquiry PIN**—Four-digit Personal Identification Number assigned and sent to an enrolled taxpayer. The Inquiry PIN, along with an Internet password, allows clients to check their payment history. They cannot make or cancel payments.
- **Threshold Amount**—When you enroll a client, you can choose to set payment dollar amount limits for each of the client’s tax types. When you make a payment for that client and tax type, the system will compare your payment amount against your stated limit and provide a warning if you exceed the limit. You can choose to override the warning.
- **TIN**—Taxpayer Identification Number. Nine-digit Employer Identification Number (EIN) for a business or nine-digit Social Security Number (SSN) for an individual. The TIN is assigned by the IRS.
- **User**—A person designated to use the software by the Administrator.
- **User ID**—The description or nickname of a person using the software.
- **VRS**—Voice Response System. The automated telephone system used to obtain a Password.

APPENDIXES

APPENDIX A RECORD LAYOUT FOR IMPORTING ENROLLMENTS

Imported files must conform to the length and validation rules outlined below. Imported enrollments will be saved to the Send Enrollments grid with a status of “New.”

Field Name	Type	Length	Field Edits
Batch Filer ID	Numeric	9	Must be 9 digits
Master Inquiry PIN	Numeric	4	Must be 4 digits
File Date	Numeric	8	Must be valid date YYYYMMDD
Filer Sequence Number	Numeric	3	Must be unique within day
Enrollment Number	Numeric	4	Must be ascending within a file
Action Code	Char	1	Must contain valid value A = Add
Taxpayer Name	Char	35	Must contain at least 2 characters
Taxpayer Type	Char	1	Must contain valid values B = Business I = Individual
Taxpayer TIN	Numeric	9	Must be 9 digits
Taxpayer PIN	Numeric	4	Must be 4 digits
Secondary TIN	Numeric	9	Must be blank
Country Code	Char	2	Must be non-blank, using ISO country codes
State	Char	2	Must be valid state if country code = US
ZIP Code	Numeric	9	Must be non-blank if country code = US and at least 5 digits
Signature Equivalent	Numeric	4	Must contain “8655” (confirms 8655 has been submitted to IRS)
Remittance Method	Char	1	Must contain valid value C= EFTPS ACH Credit D= EFTPS ACH Debit
Primary Input Method	Char	1	Must contain valid value if remittance method equal “D,” else equal blank B = batch provider
Master Account Flag	Char	1	Must contain valid value if remittance method equals “D,” else equal blank Y = Use Batch Filer Account N = Use Taxpayer Account
Routing Transit Number	Numeric	9	If Master Account flag equals “N” and if remittance method equals “D,” else equal blank. Must contain 9 digits
Account Number	Char	17	If Master Account flag equals “N” and if remittance method equals “D,” else equal blank
Account Type	Char	1	If Master Account flag equals “N” and if remittance method equals “D,” else equal blank. Must contain valid value C = Checking S = Savings

APPENDIX B RECORD LAYOUT FOR IMPORTING NEW PAYMENTS

Imported files must conform to the length and validation rules outlined below. Imported payments will be saved to the Send Payments grid with a status of “New.”

Field Name	Type	Length	Field Edits
Batch Filer ID	Numeric	9	Must be 9 digits
Master Inquiry PIN	Numeric	4	Must be 4 digits
File Date	Numeric	8	Must be valid date YYYYMMDD
Filer Sequence Number	Numeric	3	Must be unique within day
Payment Reference Number	Numeric	4	Must be ascending within a file
Action Code	Char	1	Must contain valid value P = Payment
Taxpayer TIN	Numeric	9	Must be 9 digits
Taxpayer PIN	Numeric	4	Must be 4 digits
Taxpayer Type	Char	1	Must be valid value B = Business I = Individual
Tax Type Code	Numeric	5	Must be valid tax type code
Tax Period	Numeric	6	Must be a valid date YYYYMM
Settlement Date	Numeric	8	Must be a valid date YYYYMMDD
Payment Amount	Numeric	15	Must be greater than 0 and less than 100,000,000
Subcategory code 1	Numeric	3	Not a required field; if present, must be a valid IRS code
Subcategory amount 1	Numeric	15	Not a required field; if present, sum of all subcategory amounts must equal payment amount
Subcategory code and amount repeated up to 5			
Subcategory code 5	Numeric	3	Not a required field; if present, must be valid IRS code
Subcategory amount 5	Numeric	15	Not a required field; if present, sum of all subcategory amounts must equal payment amount

APPENDIX C RECORD LAYOUT FOR EXPORTING PAYMENTS (COMMA-DELIMITED FILE FORMAT)

The comma-delimited payment export file includes the fields below in the following order:

1. EIN/SSN
2. Taxpayer Type Code, B (Business) or I (Individual)
3. Electronic Funds Transfer (EFT) Number
4. Original EFT Number (used for payments returned from the ACH banking system)
5. Cancellation EFT Number (used for canceled payments)
6. Bulk Debit Trace Number
7. Bulk Debit Cancellation Number
8. Payment Input Method (batch, phone, credit, etc.)
9. Tax Form
10. Tax Form Description
11. Tax Type
12. Tax Period
13. Total Payment Amount
14. Settlement Date
15. ACH Trace Number
16. Payment Status
17. Transaction Code
18. Input Date
19. Input Time

APPENDIX D HOW TO APPLY PROXY SETTINGS

File Configuration:

If you need to use a proxy server to connect outside of a firewall, you must place the proxy server address in one of the EFTPS batch provider software files on your hard drive. Contact your Network Administrator to obtain the specific proxy server address, port, and any realm, user name, or password information.

Application File System:

1. Obtain the following property values from your Network Administrator:
 - a. Proxy Host Name
 - b. Proxy Port
2. Determine whether your network requires the following and obtain the proper values:
 - a. Proxy Realm
 - b. Proxy Username
 - c. Proxy Password

Application Properties file

1. Close the EFTPS batch provider application while modifying the file.
2. Open the application.properties file in the applicable location:
 - a. For all platforms except Windows Vista and Windows 7: APPLICATION_HOME\conf directory
(C:\Program Files\EFTPS batch provider Client\conf\application.properties)
 - b. For Windows Vista and Windows 7: The application.properties file is located in
ProgramData EFTPS\BPClient\uniquely generated name\conf
3. Modify proxyPort=
proxyHost=
useProxy=

The proxyRealm, proxyPassword, and proxyUserName are not always required. Ask your Network Administrator which properties are needed and what the values should be.

Example of application.properties file with modified proxy settings:

```
#stored
#Mon Nov 21 10:30:24 MST 2005
SoftwareID=00000010
networkedServer=false
panel.info.background.color=207,228,255
window.gov.eftps.batchprovider.ui.MainFrameTabbed.
height=621 build.number=200510261611
dbPortNumber= http.timeout=300000
build.date=10/26/2005 04\:11 PM dbServerName=
SoftwareName=Eftps batch provider
proxyRealm=
db.driver=com.pointbase.jdbc.jdbcUniversalDriver
proxyPassword=
ProcessType=T
window.gov.eftps.batchprovider.ui.MainFrameT
abbed.y=0 networkedClient=false
version.number=0.9.9.8
window.gov.eftps.batchprovider.ui.MainFrameTabbed.x=0
proxyPort=8080
panel.error.background.color=255,255,194
db.url=jdbc\:pointbase\embedded\batchproviderdb
gov.eftps.batchprovider.rao.hostUrl=https\://192.168.85.10\:84
52/services panel.dialog.background.color=242,244,252
proxyHost=cacsecvr01.fdcsg.1dc.com useProxy=true
proxyUserName=
window.gov.eftps.batchprovider.ui.MainFrameTabbed.width=923 applicationDir=c:\Program
Files\EFTPS batch provider Client
```

Using the modified and saved proxy settings:

Once you have successfully modified and saved your proxy settings, you can connect to EFTPS to complete batch provider functions.

Any Problems

If you cannot connect to EFTPS with the newly modified proxy settings:

1. Verify that the proxy settings are entered into Internet Explorer.
2. Review the proxy configurations to make sure they are correct.

If you still have problems connecting, contact Customer Service: **1.800.945.0966**, Monday–Friday, 8 a.m.–8 p.m ET.

APPENDIX E

FEDERAL RESERVE BANK HOLIDAYS

Tax payments will not be processed through the FedACH or Fedwire Funds® on the following Federal Reserve Bank holidays:

New Year's Day

Birthday of Martin Luther King, Jr.

Washington's Birthday

Memorial Day

Independence Day

Labor Day

Columbus Day

Veterans Day

Thanksgiving Day

Christmas Day

APPENDIX F

IMPORTANT PHONE NUMBERS

Batch Provider Customer Service

1.800.945.0966

8 a.m.–8 p.m. ET, Monday–Friday

Batch Provider Master Password VRS

1.800.945.7337